

## **Crew Based Observer Programme of Pakistan**

Muhammad Moazzam  
WWF-Pakistan, 46-K, PECHS Block 6, Karachi-75400, Pakistan  
([mmoazzamkhan@gmail.com](mailto:mmoazzamkhan@gmail.com)) and

Muhammad Farhan Khan  
Fisheries Development Commissionrate, Ministry of Climate Change, Port and Shipping  
Wing, Karachi, Pakistan  
([farhankhan704@gmail.com](mailto:farhankhan704@gmail.com))

### **INTRODUCTION**

Provision for an Observer Programme is made in the Deep Sea Policy in Pakistan since 1982 when Federal Government permitted operation of foreign flag vessel in Pakistan under a Joint Venture Programme. Since 1982 various permissions have been granted for both foreign and local fishing vessels of various categories to operate in the Exclusive Economic Zone of Pakistan under various policies and programmes.

A new Deep Sea Fishing Licensing Policy, 2018 was issued by Federal Government in April 2018 (DSFP, 2018). Like all previous policies and programmes it has provision for having an observer on board. Clause 6.2.q. of this Policy states “Scientists/Researchers will be deputed by MFD (Marine Fisheries Department) on vessels as and when required for collection of fisheries data. Fishing vessels will also carry onboard a representative of MFD as Observer”. More than 100 vessels including stern trawler, pair trawlers and tuna longliners operated between 1982 and 2009 were allowed to operate in the EEZ of Pakistan. During this period, observers (known as inspectors/research assistants/senior research assistants) were posted on each vessel but no reliable data was generated during this period. Since 2015 no trawler was licensed to operate in EEZ whereas last tuna longliner was permitted in 2009. No observer was ever posted on artisanal fishing boats although some of these were operating in EEZ of Pakistan and even beyond.

WWF-Pakistan initiated a programme where instead of placing external observers onboard tuna gillnet vessels, a crew member (mostly skippers) was assigned to carry out the duties of an observer collecting information about the catch and other information about the fishing operations. Present paper describes in detail this “Crew Based Observer Programme”.

## **GILLNET FISHING OF PAKISTAN**

Gillnetting for tuna and tuna like species is an important component of the coastal and offshore fisheries of Pakistan as a major part of the artisanal fleet is engaged in this fishing. Gillnets consisting of monofilament and multifilament are used for catching tuna and tuna like species. Monofilament net is mainly used for catching frigate (*Auxis thazard thazard*) and bullet tunas (*Auxis rochei*) whereas multifilament nylon nets are used for catching longtail tuna (*Thunnus tonggol*), kawakawa (*Euthynnus affinis*), striped bonito (*Sarda orientalis*), yellowfin tuna (*Thunnus abacares*) and skipjack tuna (*Katsuwonus pelamis*). Bigeye tuna (*Thunnus obesus*) is rarely caught by the gillnet fishing vessels in coastal and offshore waters, therefore, it does not contribute to the tuna landings of Pakistan. There are about 700 tuna longliners based mainly in Karachi along Sindh Coast and Gwadar along Balochistan Coast.

Information about tuna fisheries of Pakistan is known through the work of Khan (2016), Moazzam (2011, 2012a-c, 2014, 2017, 2018a-b), Moazzam and Ayub (2015, 2017), Moazzam *et al.*, (2016, 2017) and Nawaz and Moazzam (2014). These studies were based mainly on the fisheries statistical data being published by Marine Fisheries Department, Government of Pakistan and also some information collected through the Crew-based Observer Programme initiated by WWF-Pakistan in 2012.

## **CREW BASED OBSERVER PROGRAMME**

It was well known that gillnet fisheries is marred with high bycatches which include commercially important species, marine turtles, cetaceans, whale sharks, sharks, mobulids and other non-target species but the extent of bycatch entanglement and mortality was not known. In order to gather this information, WWF-Pakistan initiated a study in 2012 with the financial assistance of Indo-Pacific Cetacean Research and Conservation Foundation (IPCRCF), Australian Marine Mammal Center, Australian Antarctic Division, Government of Australia which was aimed to assess the mortality of cetacean and other endangered, threatened and protected (ETP) species in the tuna gillnet fisheries of Pakistan. The project envisages deployment of two observers for data collection on the tuna fishing vessels.

WWF-Pakistan selected a few candidates (mainly fresh science graduates, master students mainly belonging to fishermen families) and conducted exhaustive training for data collection. However, after training these candidates refused to work as an observer because of long fishing trips (upto 45 days), improper accommodation facilities, unhygienic food and presence of pests on the fishing vessels. Tuna boats like other fishing vessels are known to be infested with roaches, scorpions, centipedes and rodents, mainly Norwegian rats (Fig. 1-2).

After several failed attempts to post observers onboard, WWF-Pakistan decided to assign the data collection on cetacean mortality to skipper of one of the tuna vessel. This turned out to a major breakthrough as that skipper provided much needed data of catches of tuna and tuna like species, bycatch species and other information about the fishing operations. The skipper was provided with a template (Fig. 1) to record the data and also collect photographic record of the catch for daily fishing operations. It is pointed out that one tuna gillnet operation is carried out each day. The net is laid down in the evening and after an average soak time of 12 hours net is leaved in the morning. No fishing operation is carried out during the day time. No tuna gillnet operation is carried out during monsoon months (June and July) which is voluntarily observed as close season. In some years (like in 2018) the close season was observed for 90 days (mid May to mid August) because it coincided with religious holidays.



Fig. 1. Tuna fishing vessel is infested with scorpion



Fig. 2 Norwegian rat entrapped on board tuna fishing vessel.

ٹونا فشری معلومات		لوگوں کے نام (LOOS) اور (GEF) SUP-SHIP SURVEILLANCE	
تاریخ	تہذیب	کشتی کا نام	کشتی کا نمبر
ریجن	کشتی کی قسم	کشتی کے مالک کے نام	کشتی کے مالک کا پتہ
کشتی کے ڈرائیور کے نام	کشتی کے ڈرائیور کا پتہ	کشتی کے ڈرائیور کا نمبر	کشتی کے ڈرائیور کا پتہ
کشتی کے ڈرائیور کے پتے	کشتی کے ڈرائیور کے پتے	کشتی کے ڈرائیور کے پتے	کشتی کے ڈرائیور کے پتے
کشتی کے ڈرائیور کے پتے	کشتی کے ڈرائیور کے پتے	کشتی کے ڈرائیور کے پتے	کشتی کے ڈرائیور کے پتے
کشتی کے ڈرائیور کے پتے	کشتی کے ڈرائیور کے پتے	کشتی کے ڈرائیور کے پتے	کشتی کے ڈرائیور کے پتے
کشتی کے ڈرائیور کے پتے	کشتی کے ڈرائیور کے پتے	کشتی کے ڈرائیور کے پتے	کشتی کے ڈرائیور کے پتے
کشتی کے ڈرائیور کے پتے	کشتی کے ڈرائیور کے پتے	کشتی کے ڈرائیور کے پتے	کشتی کے ڈرائیور کے پتے
کشتی کے ڈرائیور کے پتے	کشتی کے ڈرائیور کے پتے	کشتی کے ڈرائیور کے پتے	کشتی کے ڈرائیور کے پتے
کشتی کے ڈرائیور کے پتے	کشتی کے ڈرائیور کے پتے	کشتی کے ڈرائیور کے پتے	کشتی کے ڈرائیور کے پتے

Fig. 3. Template being used by Crew-based Observers

Considering the quality and diversity of the information generated through this programme the number of observers was increased to four during 2013 and 2014 and gradually increased to 75 observers in 2017 (Fig. 4). Now this crew observer programme is funded through FAO/GEF/Common Oceans ABNJ project. The observers were paid Rs 18,000 (US \$ 140) per month for the collection of information.

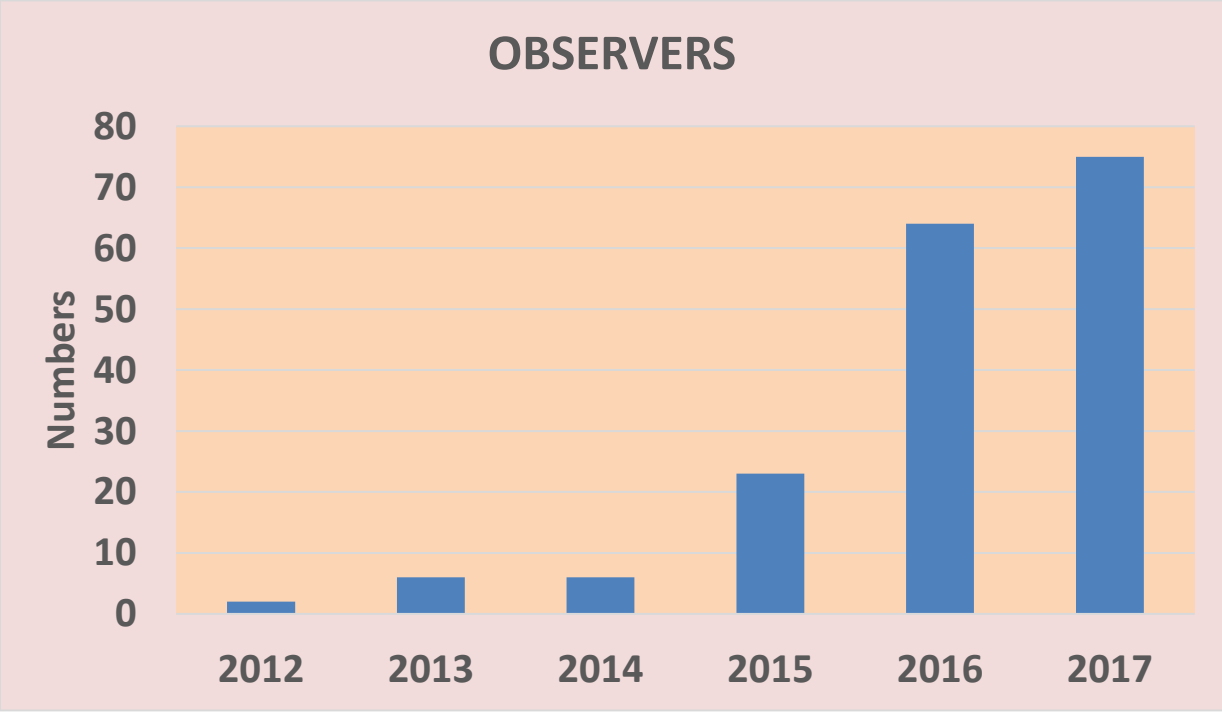


Fig. 4. Number of Crew Based Observer Programme (2012-2017)

Crew Based Observer Programme is considered by WWF-Pakistan as successful because crew of tuna gillnet vessels are well trained and accustomed to work in high

seas. Observers from outside need to be trained and require to develop capabilities to work in harsh offshore conditions. For the crew based observers no additional facilities are required. Since gillnet operation is not done during the day time, therefore, the observers have adequate spare time to record the collected data without affecting their own work. Crew based observers can identify fishes to species level using traditional knowledge (folk taxonomy). External observers have to be trained to identify fish species.

## **DATA COLLECTED THROUGH CREW BASED OBSERVER PROGRAMME**

All crew based observers are required to collect and record following information for each hauls on the template:

1. Quantity and estimated weight of all tuna species
2. Quantity and estimated weight of all tuna like species
3. Quantity and estimated weight of all bycatch fish species including sharks, rays, queenfish, trevallies, leatherskin and other fish and shellfish species
4. Quantity and estimated weight of all ETP species (including cetaceans, sea turtles, whale sharks, mobulids, queenfish, sunfish and other similar species.
5. Measure the length (fork length) of 3 specimens of dominant tuna and tuna like species (Fig. 5-6)
6. Measure the length of each specimens of ETP species
7. GPS location of the net deployment and net retrieval area.
8. Date and time of net placement and retrieval
9. Photograph of the catch and selected specimens using digital camera.
10. Photograph of free swimming schools of tuna, dolphins and whales

In addition, at the start of each fishing voyage, the crew based observer is required to record:

1. Date of departure
2. Quantity of ice, ration, water and fuel
3. Number of panels of the gillnets
4. Length of each panel
5. Possible fishing ground
6. Other details of vessel
7. Any important event or observation (such as HAB blooms, water spout)

After the completion of each trip, observer is interviewed in a debriefing session during which details of the fishing trips, species composition and other information about fishing trip is obtained. The collected data is stored in WWF-Office (Fig. 7) whereas all information collected by the observers is stored in especially designed software.



Fig. 5. Recording the length of tuna species



Fig. 6. Recording the weight of bycatch species (mako shark)



Fig. 7. In addition to digital record, hard copies of the original data sheet is systematically stored

The data is analyzed for recording monthly catch of each tuna and tuna like species, bycatch species and ETP species. Through each data sheet information about catch of each species is recorded (Fig. 8).

Location	Fishing Vessel	Date	19/3/17
Time		Name of Sampler	
Fishing Boat		Type of fishing	
Duration of fishing trip		Area of fishing	
No of crew on board		Name of Nakhuda	
No of Net Panels (Kandas)		Length of one kanda (m)	
Length of Net (km)		Width of Net (m)	
Ration (kg)		Fuel (lit)	
Water (tanks)		Ice (Ladd)	
No of Gales		No of filled Gales	
Total Catch (kg)	24.16.624 N	65.38.240 E	
GPS Location			
Remarks			
TAIR No			
Species	No of Specimens	Total Weight	Remarks
Gayder/Zardum	13	85	
Dawan		18	
Kishi	6		
Chunki			
Budki/Bindol/frigate			
Bullet			
Dantani			
Total	19	103	
Species	No of Specimens	Total Weight	Remarks
Ghora			
Gatti			
Amrusk	7	28	
Gore			
Kund			
Duthar			
Khagha			
Kakawan			
Sangra			
Baary			
Sura			
Hira			
Sapna			
Ar mangar	1	1	
Mangra 1			
Mangra 2			
Other Species			
Other Species			
Other Species			
Other Species			
Malhar/Dolphin			
Kachwa/Turtle			
Andhi mangar			
Weesar			
Pakhi			
Total	8	28	
TOTAL	27	132	
Species	Length Frequency Data		
Gayder/Zardum	109,113,112,60,57,71,76,51		
Dawan			
Kishi	60,61,66		
Chunki			
Budki/Bindol			
Bullet			
Dantani			
Ghora			
Gatti			
Amrusk	70,69,94,63,77		
Gore			
Kund			
Duthar			
Khagha			
Kakawan			
Sangra			
Baary			
Sura			
Sapna	40,36		
Ar mangar			
Mangra 1			
Mangra 2			
Other Species			
Other Species			
Other Species			
Other Species			
Malhar/Dolphin			
Kachwa/Turtle			
Andhi mangar			
Weesar			
Pakhi			

Fig. 8. Data sheet of each fishing day is digitized

Tuna Catch Data			
Species	No of Specimens	Total Weight	Remarks
Gayder/Zardum	366	1,969	
Dawan	46	159	
Kishki	72	221	
Chunki	50	129	
Budki/Bindol/frigate	-	-	
Bullet	-	-	
Dantani	8	20	
<b>Total</b>	<b>542</b>	<b>2,498</b>	

Bycatch Data			
Species	No of Specimens	Total Weight	Remarks
Ghora	4	123	
Qatil	-	-	
Amrusk	134	488	
Gore	-	-	
Kund	-	-	
Duther	-	-	
Khagha	-	-	
Kakawan	-	-	
Sangra	-	-	
Baam	-	-	
Sunaf	-	-	
Hira	-	-	
Sapna	19	16	
Ar manger	-	-	
Mangra 1	4	5	
Mangra 2	2	35	
Other Species	-	-	
Other Species	-	-	
Other Species	-	-	
Other Species	-	-	
Malhar/Dolphin	-	-	
Kachwa/Turtle	-	-	
Andhi mangar	-	-	
Weesar	-	-	
Pakhi	-	-	
<b>Total</b>	<b>163</b>	<b>667</b>	
<b>TOTAL</b>	<b>705</b>	<b>3,165</b>	

Fig. 9. Data sheet of monthly catch of one observer

A summary of monthly catch of each species is generated (Fig. 9) for each observer which is compiled for a complete year (Fig. 10).

Tuna Species	January	February	March	April	May	June	July	August	September	October	November	December	Total
Gayder/Zardum	1,078	1,688	1,969	1,270	222				3,347	8,896	3,095	200	21,765
Dawan	265	276	159	975	285					4,700	280	660	7,600
Kishki	522	821	221	178	33				189	294	1,029	321	3,608
Chunki	285	168	129	345	15						14	142	1,098
Budki/Bindol/frigate	0												-
Bullet	0												-
Dantani	0		20										20
<b>Subtotal</b>	<b>2,150</b>	<b>2,953</b>	<b>2,498</b>	<b>2,768</b>	<b>555</b>	<b>0</b>	<b>0</b>	<b>0</b>	<b>3,536</b>	<b>13,890</b>	<b>4,418</b>	<b>1,323</b>	<b>34,091</b>
<b>Bycatch</b>													<b>-</b>
Ghora	480	125	123	675	75				210	349	1,075	225	3,337
Qatil	0												-
Amrusk	486	481	488	424	140				182	634	756	268	3,859
Gore	11	4		104						39		60	218
Kund	0												-
Duther	0												-
Khagha	0			122						69			191
Kakawan	0												-
Sangra	0	6											6
Baam	0												-
Sunaf	0												-
Hira	0												-
Sapna	6	24	16	4	1					2	1		54
Ar manger	0	18		70	22								110
Mangra 1	113	64	5							252		97	531
Mangra 2	0		35							8		22	65
Other Species	0			259						1,881			2,140
Other Species	0			2						12			14
Other Species	0												-
Other Species	0												-
Malhar/Dolphin	0												-
Kachwa/Turtle	0												-
Andhi mangar	0												-
Weesar	0												-
Pakhi	0												-
<b>Total</b>	<b>3,246</b>	<b>3,675</b>	<b>3,165</b>	<b>4,428</b>	<b>793</b>	<b>0</b>	<b>0</b>	<b>0</b>	<b>3,928</b>	<b>17,136</b>	<b>6,250</b>	<b>1,995</b>	<b>44,616</b>

Fig.10. Data sheet of catch of one observer for a complete calendar year



Year-wise data for all observers is compiled in form of an average summary sheet and estimated landings of the fleet engaged in catching tuna is generated (Fig.11).

Tuna Species	Iqrar	Shah Zamin	Saeed Zaman	Ismail	Noor Khan	Badsha Nawab	Nisar Hasan	Falak Naz	Saeed Badsha	Subtotal	Average	Landings of fleet
<b>Gayder/Zardum</b>	21,765	32,632	22,835	21,196	29,043	30,176	23,456	21,345	29,876	210,559	26,320	23,688
<b>Dawan</b>	7,600	15,711	21,087	10,501	16,112	16,543	8,734	20,932	17,653	127,273	15,909	14,318
<b>Kishki</b>	3,608	2,881	3,765	3,424	2,712	3,002	4,323	2,489	2,993	25,589	3,199	2,879
<b>Chunki</b>	1,098	2,572	3,834	2,099	2,600	2,134	2,871	3,217	2,345	21,672	2,709	2,438
<b>Budki/Bindol/frigate</b>	-	4,038	484	10,103	4,091	3,298	9,876	421	2,310	34,621	4,328	3,895
<b>Bullet</b>	-	15	-	-	-	-	-	-	-	15	2	2
<b>Dantani</b>	15	-	-	15	-	-	-	-	-	15	2	2
<b>Subtotal</b>	34,086	57,849	52,005	47,338	54,558	55,153	49,260	48,404	55,177	419,744	52,468	47,221
<b>Bycatch</b>	-	-	-	-	-	-	-	-	-	-	-	-
<b>Ghora</b>	3,337	4,154	1,249	1,231	2,134	1,324	2,137	2,195	1,675	16,099	2,012	1,811
<b>Qatil</b>	-	2,680	-	512	1,211	1,321	290	380	450	6,844	856	770
<b>Amrusk</b>	3,859	4,380	4,367	4,939	3,599	4,598	4,143	4,328	4,876	35,230	4,404	3,963
<b>Gore</b>	218	1,560	1,385	2,316	1,100	1,543	3,212	1,212	1,342	13,670	1,709	1,538
<b>Kund</b>	-	17	-	-	44	-	32	54	98	245	31	28
<b>Duthar</b>	-	6	45	-	1	-	-	-	43	95	12	11
<b>Khagha</b>	191	395	833	460	878	-	-	32	876	3,474	434	391
<b>Kakawan</b>	-	-	515	-	-	-	324	412	-	1,251	156	141
<b>Sangra</b>	6	60	50	-	78	78	432	321	-	1,019	127	115
<b>Baam</b>	-	-	-	-	9	-	-	-	-	9	1	1
<b>Sunaf</b>	-	-	-	-	-	21	21	-	-	42	5	5
<b>Hira</b>	-	21	-	-	21	29	-	-	321	392	49	44
<b>Sapna</b>	54	23	-	-	11	11	34	-	124	203	25	23
<b>Ar manger</b>	110	15	14	-	9	-	54	432	-	524	66	59
<b>Mangra 1</b>	531	1,290	-	-	1,180	1,342	32	65	1,234	5,143	643	579
<b>Mangra 2</b>	65	90	-	-	88	27	-	-	21	226	28	25
<b>Other Species</b>	2,147	2,732	3,998	1,480	2,912	2,196	2,134	321	2,312	18,085	2,261	2,035
<b>Other Species</b>	12	414	16	-	432	321	43	16	213	1,455	182	164
<b>Other Species</b>	-	23	1	11	-	34	453	1	-	523	65	59
<b>Other Species</b>	-	-	-	-	-	-	-	-	-	-	-	-
<b>Malhar/Dolphin</b>	-	-	-	-	-	-	-	-	-	-	-	-
<b>Kachwa/Turtle</b>	-	-	-	-	-	-	-	-	-	-	-	-
<b>Andhi mangar</b>	-	-	-	-	-	-	-	-	-	-	-	-
<b>Weesar</b>	-	-	-	-	-	-	-	-	-	-	-	-
<b>Pakhi</b>	-	-	-	-	-	-	-	-	-	-	-	-
<b>Total</b>	44,616	75,709	64,478	58,287	68,265	67,998	62,601	58,173	68,762	524,273	65,534	58,981

Fig. 11. Summary Sheet for all observers (9 shown here) and total catch of tuna vessels

## RECONCILIATION OF DATA WITH GOVERNMENT OF PAKISTAN

During the course of the study it was realized that landings data for tuna species reported by Government of Pakistan (which is also supplied to IOTC) differs considerable from the data compiled by WWF-Pakistan, therefore, an exercise of reconciliation of the data was carried out (Fig. 12).

Species	Landings of fleet	Balochistan Data	Small Scale Fisheries	Data Communicated to IOTC
Yellowfin tuna	23,688	1,783	-	25,471
Longtail tuna	14,318	1,135	3,690	19,143
Skipjack Tuna	2,879	-	299	3,178
Kawakawa	2,438	-	1,761	4,199
Frigate Tuna	3,895	-	9,292	13,187
Bullet Tuna	2	-	-	2
Striped Bonitos	2	-	-	2
Tuna NEI	-	5,919	-	5,919
<b>SubTotal</b>	<b>47,222</b>	<b>8,837</b>	<b>15,042</b>	<b>71,101</b>
Billfish	2,581	1,709	-	4,290
Spanish Mackerel	1,538	8,800	11,614	21,952
Dolphinfish	3,963	1,157	-	5,120
<b>Total Tuna and Tuna Like</b>	<b>55,304</b>	<b>20,503</b>	<b>26,656</b>	<b>102,463</b>

Fig. 12. Calculation of the annual landings of Pakistan (2017)

In the compilation of the landing data information collected through crew based observer programme, data for tuna and tuna like species provided by the Balochistan province and landing data collected from small scale fisheries (mainly neritic tuna) is also incorporated, thus generating total landings of tuna and tuna like species in Pakistan. This data is communicated to IOTC by Government of Pakistan.

Considering the disparity between the data previously reported to IOTC and the one generated through reconciliation process (2013 to 2017), it was decided that data for previous years (1987-2012) will be reconstructed considering various factors including impact of piracy, fleet modification, data of longline operations, fleet adjustments and other similar factors. This reconstructed data is also communicated to IOTC by Government of Pakistan.

### DATA GENERATED THROUGH CREW BASED OBSERVER PROGRAMME

In addition to catch data of tuna and tuna like species, crew based observer programme became a major source for determining the seasonal changes in the quantity of bycatch species (Fig. 13). The data reveals that quantity of bycatch species is more than tuna species during September, November to January 2013) whereas in the remaining months tuna quantities are more than bycatch species.

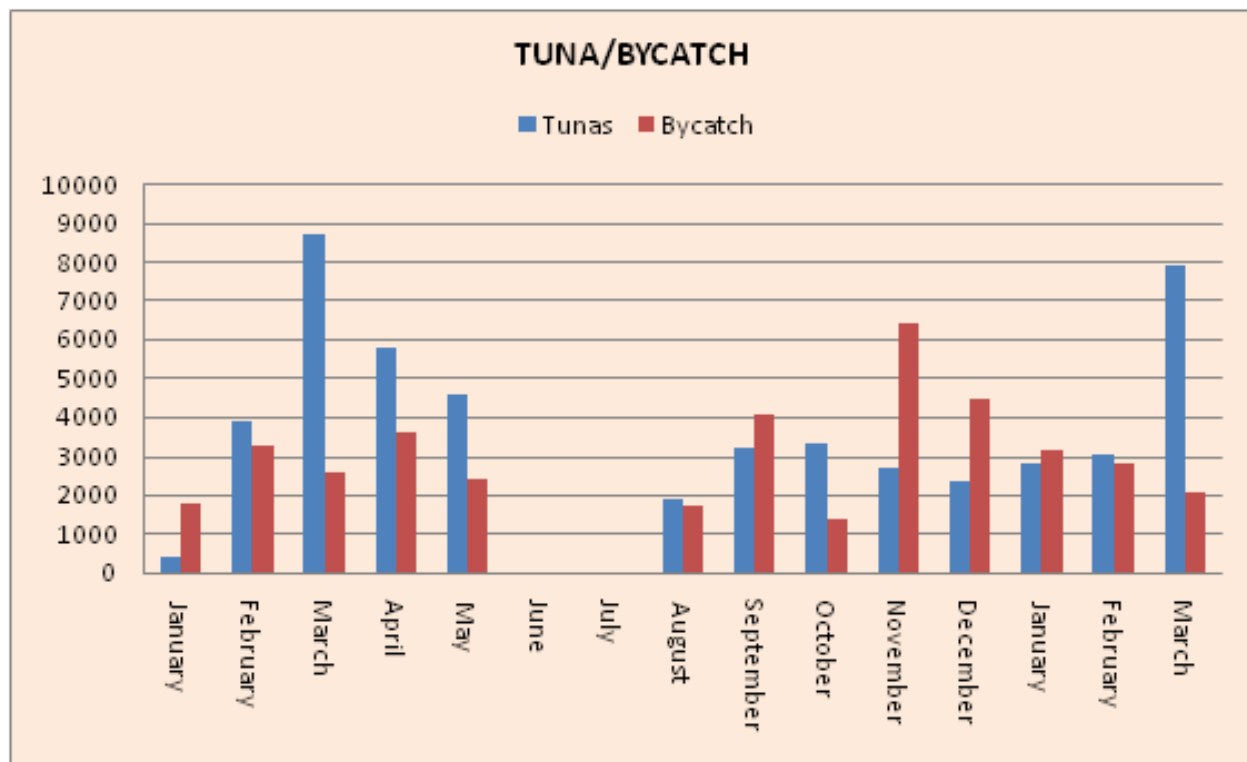


Fig. 12 . Tuna catch and bycatch (2013-14)

The data also indicates that sharks and dolphinfish are dominating among bycatch followed by sailfish and queenfishes (Fig. 14). Among ETP species, cetaceans contribute about 1 % and turtles contribute 2 %.

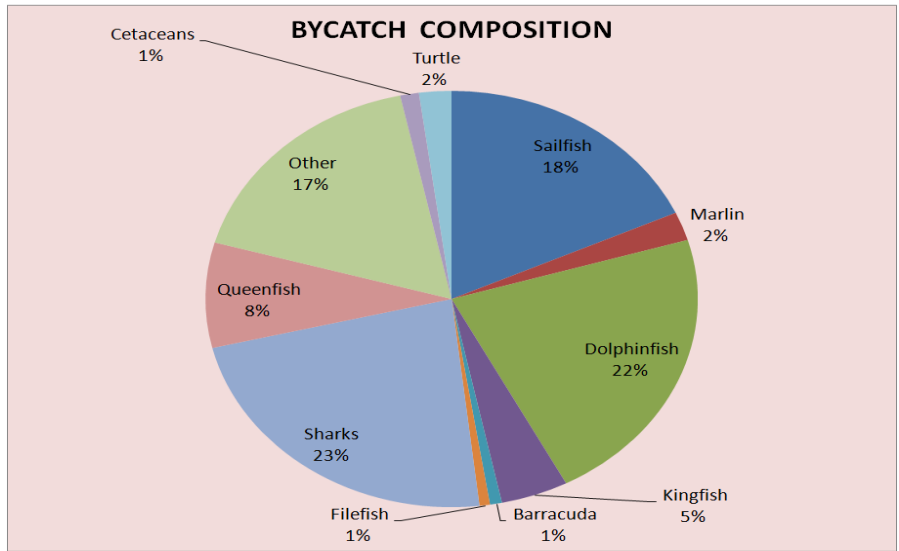


Fig. 13. Composition of bycatch (2014)

The study further revealed marked seasonality in the entanglement of turtles (Fig. 14) and cetaceans (Fig. 15). It was surprising that more than 28,000 marine turtles are entangled annually whereas number of dolphins annually entangled are about 12,000. It was also noticed that almost all dolphins die during entanglement whereas almost all turtle survive entanglement.

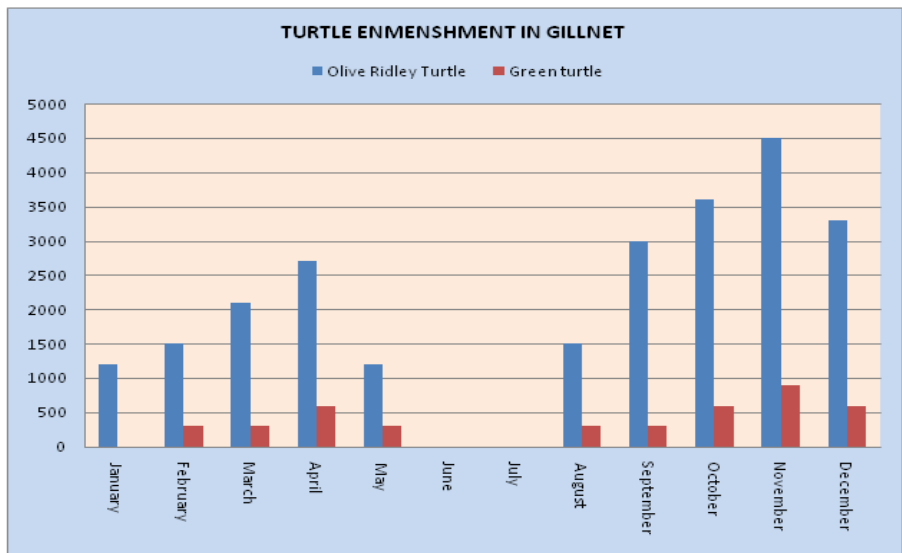


Fig. 14. Entanglement of marine turtles in gillnet (2014)

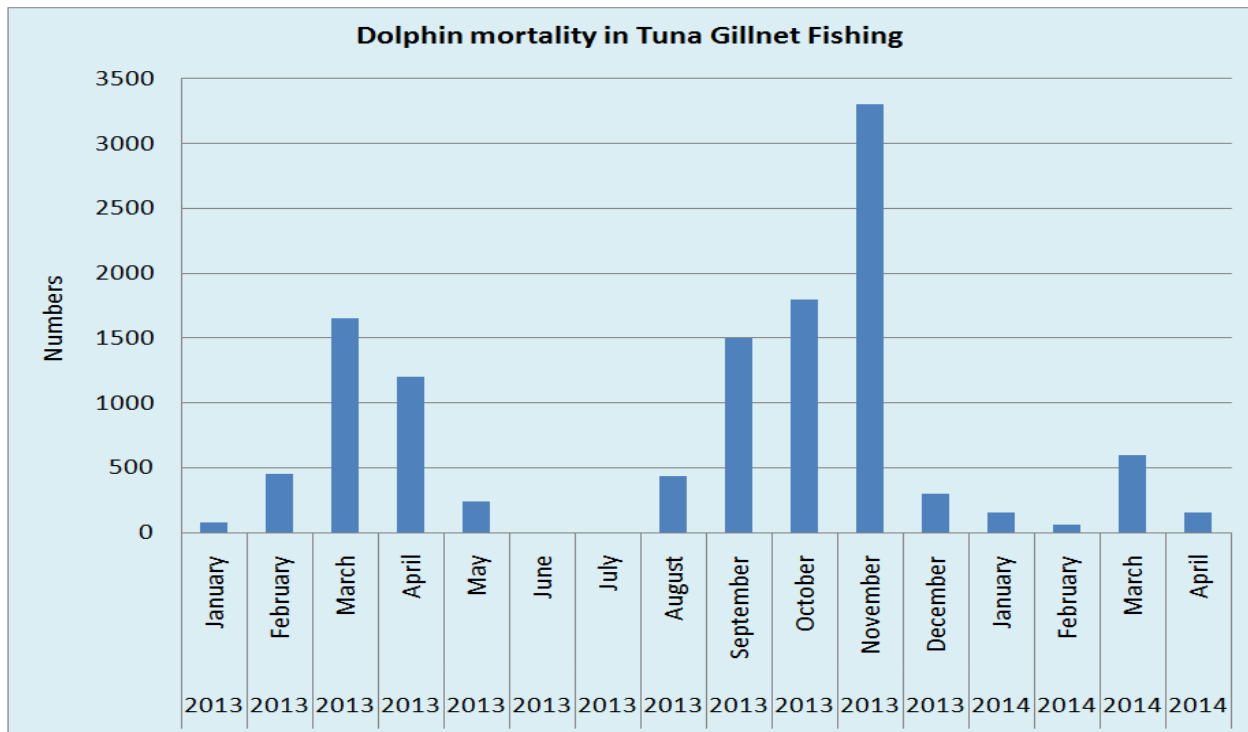


Fig. 15. Entanglement and mortality of dolphins in tuna gillnetting (2013-14)

## CONCLUSION

Crew based observer programme implemented by WWF-Pakistan seems to a major source of data collection from the gillnet fleet operating in coastal and offshore waters of Pakistan. Government of Pakistan could not start a credible observer programme because of a number of reasons including willingness of the observers to work on tuna gillnet vessels which have inadequate and improper facilities. In most cases vessels are too small to accommodate an additional person onboard. There are other administrative reasons which are barriers in initiating a Observer Scheme comparable to such programmes being implemented in some other Indian Ocean countries and fisheries.

Considering that the crew based observer programme is comparable to IOTC requirements except meeting some of the condition, but this seems to be the only possible solution, therefore, Government of Pakistan supports continuation of this programme in Pakistan. Need not to mention that crew based observer programme comparable to the one implemented in Pakistan has been initiated for small scale tuna gillnet fishing in some parts of Sri Lanka. A similar programme is also attempted in Oman for collection of bycatch data.

WWF-Pakistan and Government of Pakistan are of the opinion that for small scale tuna fisheries, crew based observer programme is possible the alternate of observer programme required under IOTC Resolution. It may be pointed out that variation of the

information of the catches is being done through digital record maintained by the crew based observers (digital camera photos) whereas some experiments have been done by WWF-Pakistan through installation of CCTV cameras which is also used for verification of the catch. Further experiments with other electronic monitoring systems (such as Flywire) are being undertaken by WWF-Pakistan.

It is hoped that crew based observer programme will get wider acceptability in regional countries of the Indian Ocean and may become a acceptable system of data generation as done through IOTC Regional Observer Programme.

## REFERENCES

- Khan, M. F., 2016. Status of Tropical Tuna Gillnet fisheries in Pakistan. Working Party on Tropical Tuna (WPTT18) 05 November, 2016- 10 November, 2016. Mahé, Seychelles. IOTC-2016-WPTT18-INFO3.
- Moazzam, M., 2011. Tuna fishing of Pakistan: Impact of transboundary migration on exploitation levels. In: Proceedings of Seminar "Transboundary Coastal and Marine Protected Areas with Special Priorities for Spawning Grounds (27-28 May, 2009). (Eds. Wahab, A., Moazzam, M. and Hasan, A., (Editors) 2011. Zoological Survey of Pakistan, Islamabad. Pp. 49-60.
- Moazzam, M., 2012a. Tuna Situation Analysis. WWF-Pakistan Report. Karachi 43p..
- Moazzam, M., 2012b. The impacts of piracy in the Pakistani fisheries sector: case study of Pakistan. In: Seminar on "The impacts of Piracy on Fisheries in the Indian Ocean" Mahé, Republic of Seychelles, 28 – 29 February 2012. European Bureau for Conservation and Development.
- Moazzam, M., 2012c. Status of fisheries of neritic tuna in Pakistan. Second Session of the Working Party on Neritic Tuna (WPNT02) 19-21 November, 2012 Penang, Malaysia. IOTC 2012 WPNT02 13.
- Moazzam, M., 2018a. Status of Neritic Tuna Fisheries of Pakistan. Working Party on Neritic Tuna (WPNT08) 21 August, 2017 - 24 August, 2018. Mahé, Seychelles IOTC-2018-WPNT08-17.
- Moazzam, M., 2018b. Status of fisheries of yellowfin and skipjack tunas in Pakistan. Working Party on Tropical Tuna (WPTT20) 29 October, 2018 - 03 November, 2018. Mahé, Seychelles. IOTC-2018-WPTT20-13
- Moazzam, M. and Ayub, S., 2017. Catch reconstruction of neritic tuna landings of Pakistan based on data collected by WWF-Pakistan's Crew Based Observer

Programme. Seventh Session of IOTC Working Party on Neritic Tuna (WPNT07) 10-13 July 2017. Male, Maldives. IOTC- 2017-WPNT07-11.

Moazzam, M., Khan, M. F. and Khan, M. W., 2017. Status of Gillnet fisheries and Data Reconstruction of Tropical Tuna in Pakistan. Working Party on Tropical Tuna (WPTT19) 17 October, 2017 - 22 October, 2017. Mahé, Seychelles. IOTC 2014 WPTT19 12\_Rev1.

Nawaz, R., and Moazzam, M., 2014. An assessment of cetacean mortality in the tuna fisheries of Pakistan. Final Report Australian Marine Mammal Centre Grants Program. WWF-Pakistan 89p.

Moazzam, M., Nawaz, R., and Ayub, S., 2016. Update on the neritic tuna fisheries of Pakistan. Sixth Session of IOTC Working Party on Neritic Tuna (WPNT057) 21-24 June 2016. Mahe, Seychelles.. IOTC- 2016-WPNT06-24.